

Technical and General Information / Application Range Diagrams Общая техническая информация / Диаграммы применения

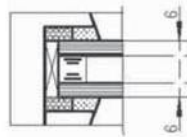
Sash Rebate Sizes

Max.	SRW 1480 mm SRH 2530 mm	Overall sash area must not exceed 2.4 m ² or 130 kg in weight and a height to width ratio of SRH: SRW max. 1: 1.5
Min.	SRW 280 mm SRH 320 mm	with VCD. Corner Drive, Stay Arm size VMK. and Espagnolette height VGR.
	SRW 350 mm SRH 295 mm	with VCD. Corner Drive (with locking cam fitted on top) Stay Arm size VMK. and Espagnolette height VGR.

Determining The Glass Weight:

Glass Thickness (mm)	24	22	20	18	16	14	12	10	8
Glass Weight (kg/m ²)	60	55	50	45	40	35	30	25	20

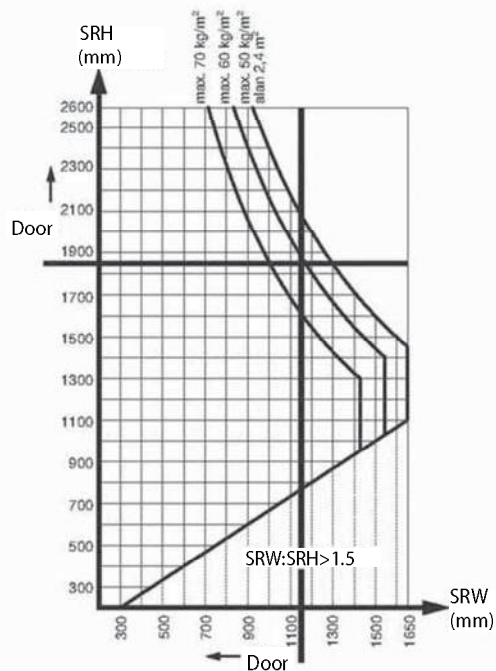
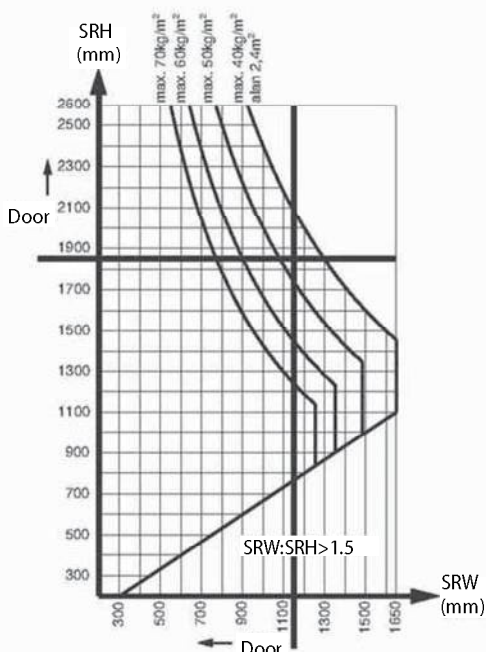
1 mm = 2.5 kg/m²



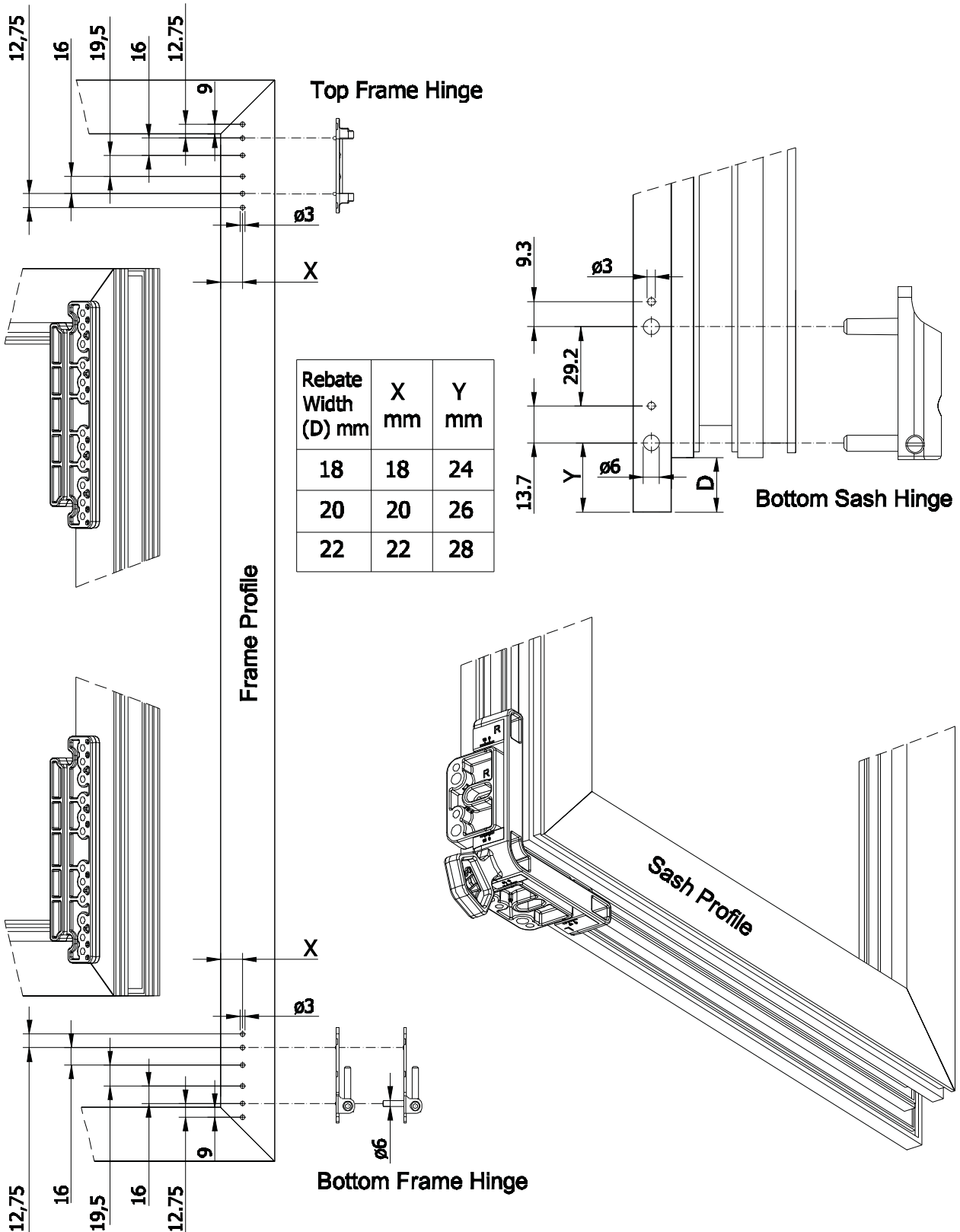
Glass Thickness 12 mm

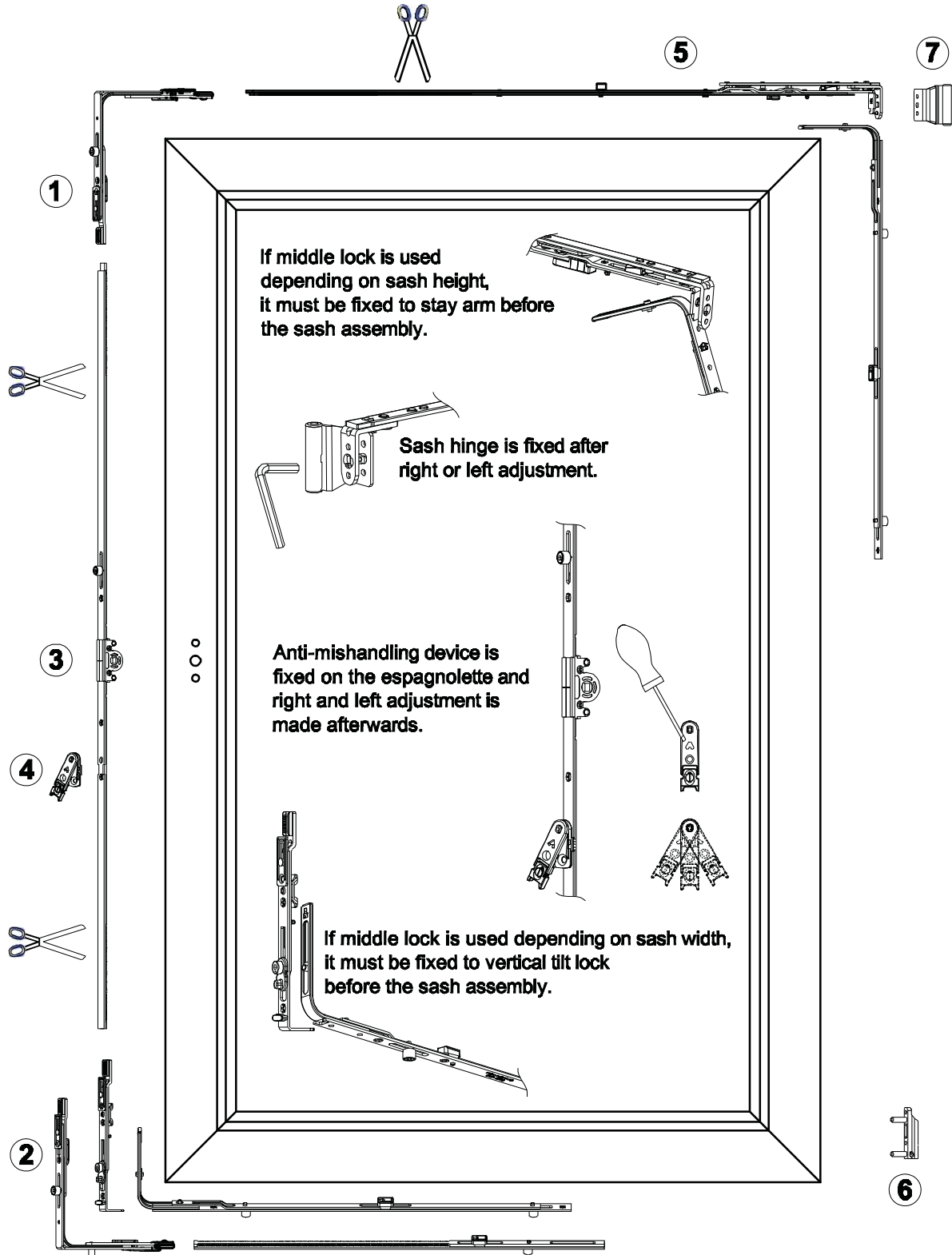
Max: 100 Kg. Sash Weight

Max: 130 Kg. Sash Weight



Technical and General Information / Assembly Instructions / Frame and Sash Hinges
Общая техническая информация / Инструкция по сборке / Петли рамы и створки





Technical and General Information / Assembly Instructions / Maintenance & Adjustment
Общая техническая информация / Инструкция по сборке / Регулировка и обслуживание

